



## Business Location Landkreis Forchheim





## Contents

Foreword	3
Promotion of economic development in Landkreis Forchheim	5
The district Forchheim	6
EMCC Dr. Rašek	8
Hofmann GmbH	9
Infiana Germany GmbH & Co. KG	10
Kennametal Produktions GmbH & Co. KG	11
Liapor GmbH & Co. KG	12
NAF Neunkirchener Achsenfabrik AG	13
Piasten GmbH & Co. KG	14
Schmetterling Reisen GmbH & Co. KG	15
Schmetterling Reise- und Verkehrs-Logistik GmbH	16
Siemens AG, Healthcare	17
Simon Hegele Gesellschaft für Logistik und Service mbH	18
Tutogen Medical GmbH	19
Junior chamber Forchheim	21
Contacts in Landkreis Forchheim	22
Imprint	23



## Ladies and Gentlemen,



The district of Forchheim (Landkreis Forchheim) is a perfect economic location. On the following pages, we would like to show you what living and working in an ideal environment can be like.

The companies that have already set up business here are our "ambassadors" for a top location, and are outstanding examples of our economic strength. The district of Forchheim offers outstanding conditions for dynamic economic development: its excellent location and well-developed infrastructure, as well as the charming scenery of Franconian Switzerland (Fränkische Schweiz) provide a unique combination of location factors.

However, we also have "intellect" as a raw material, within the framework of numerous education campaigns and in the immediate vicinity of several university towns in the metropolitan region of Nuremberg. Benefit from the advantages of our region and convince yourself of the qualities of the district of Forchheim.

Numerous companies from a wide range of industries have already become established here. The district of Forchheim offers a wide spectrum, ranging from traditional, family-run businesses through classical industrial companies to modern service providers.

The largest employers will introduce themselves on the following pages. They are distributed over various locations in the 29 municipalities in our district.

They are supported by the local promotion of business development.

Find out more about the district of Forchheim as an economic zone, and allow us to convince you with our great special offers!



A handwritten signature in black ink, which appears to read 'H. Ulm'.

**Your Head of the District Authority  
Dr. Hermann Ulm**







## Promotion of economic development in Landkreis Forchheim



We are pleased to welcome you in the district of Forchheim. The local Promotion of Economic Development sees itself as the seam between economy and administration. We are there for you. The local economic development office cares in detail for:

- rendering services to local businesses / business advice
- questions concerning location planning and the search for a site, enterprise areas
- location marketing / investor acquisition
- counselling of newly established businesses
- technological and structural policies
- local employment and labour market policies
- business infrastructure (e.g. broad band technology)
- energy and climate protection
- ad-hoc requests and projects
- coordination with the communities and local mayors of the district
- contact to local companies and an overview of the domestic economy
- structural reports and data concerning the district of Forchheim
- contact to regional and national authorities and institutions



We are pleased to help you! Just contact us:

### Economic Development Office

Landkreis Forchheim  
Am Streckerplatz 3  
D-91301 Forchheim

### Persons to turn to

Mr. Dr. Andreas Rösch  
(Head of office)  
Mrs. Katharina Dornisch  
Phone: +49 (0) 9191/86 1020  
Fax: +49 (0) 9191/86 86 1028  
E-mail:  
[wifoe@lra-fo.de](mailto:wifoe@lra-fo.de)

You will find more information and details, actual projects or current events on the internet at our homepage:

[www.landkreis-forchheim.de](http://www.landkreis-forchheim.de)





## Landkreis Forchheim



### An ideal environment: "work-life-balance"

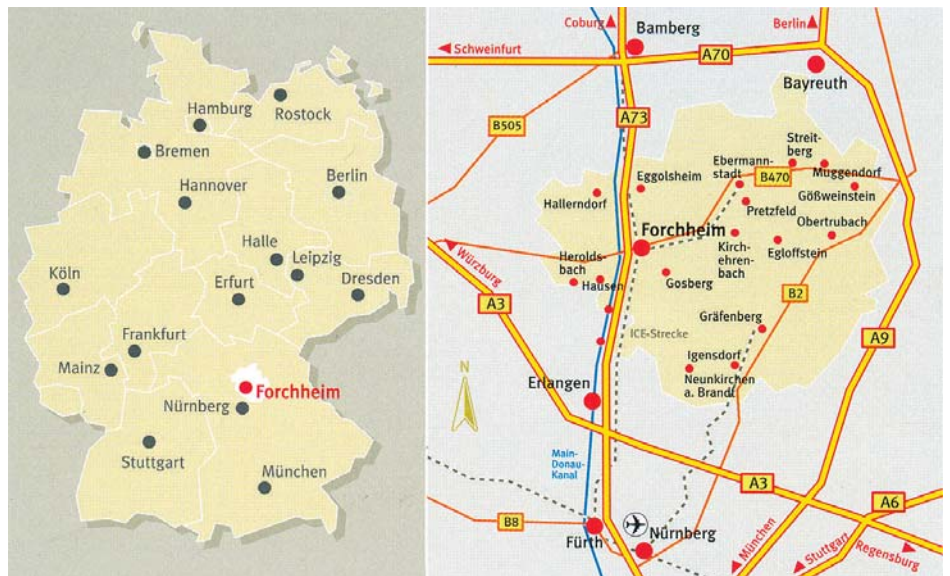
The economic region of Forchheim is the ideal environment for businesses and people to find the perfect work-life-balance. You are invited to enjoy the nearby recreation by ample spaces of unspoilt nature and many cultural events. The "lowlands" with their valleys along the rivers Regnitz, Wiesent and Aisch as well as the "uplands" of Franconian Switzerland provide ideal possibilities for leisure, sports and tourism. Europe's largest coherent sweet cherry-growing area, for example, is in the district of Forchheim. Some of our cultural events are, among others, the "Forchheim advent calendar", which is famous beyond the borders of this country and the sports event "Fränkische Schweiz Marathon" every year.

### The economic region of Forchheim: "it's the location that does that"

Landkreis Forchheim is situated at the heart of Franconia (Franken) in North-Bavaria between the Nuremberg-Fürth-Erlangen areas and the Upper Franconian centres of Bamberg and Bayreuth. Its excellent transport connections are guaranteed by internationally important traffic routes: the federal motorway A 73, the Main-Danube-Canal and the main railway line Munich – Berlin (future intercity express ICE Nuremberg – Erfurt) run from north to south through Landkreis Forchheim. The distance to the international airport in Nuremberg is 35 km (21.7 miles). Thus all major transport systems with their fast connections can be found in the economic region. This is, for example, reflected in the location of several important logistics companies in the region.

### Data and facts in view of the economic structure

The economy in the Forchheim area is distinguished by a manifold structure of industries. Important businesses, which will be portrayed in the following pages, have already established themselves. Among many others the medical systems, logistics, mechanical engineering, electrical engineering, and packaging industries as well as confectionery and textile manufacturers are above all represented in the Forchheim area. There are also smaller innovative firms represented in Landkreis Forchheim, which manufacture worldwide unique products ("hidden champions"). More than 5,000 businesses in industry, retail and craft trades as well as many businesses in the service sector provide about 29,000 jobs which are liable to contribute to social security. Traditionally the district of Forchheim in Upper Franconia shows the most favourable unemployment figures. Another important factor that speaks for the Forchheim region is the sector of recreation and tourism which manifests itself in the unique landscape of "Franconian Switzerland" ("Fränkische Schweiz").





## The district Forchheim





## EMCC DR. RAŠEK

**Contact:****EMCC DR. RAŠEK**

Boelwiese 8

91320 Ebermannstadt

Germany

T: +49-9194-9016

F: +49-9194-8125

E: info@emcc.de

The **EMCC group** is in the fields of EMC, radio, electrical safety and environmental simulation an independent and internationally leading supplier since 1977.

As a medium sized familyowned company, we offer to our global clients in our innovation centers consulting, laboratory testing and international certification and approval management.

In the meanwhile three **EMCC** companies in the county Forchheim have attained international importance:

**EMCCert DR. RAŠEK GmbH** with an expert office up to a Certification Institute

**EMCCons DR. RAŠEK GmbH & Co. KG** with Consulting, Research and Development, Test Laboratory and Seminar Centre

**EMCComp DR. RAŠEK GmbH** with production and marketing of EMC test instruments up to complete test laboratories

At the location Moggast and Unterleinleiter we are reliably available to our customers for nearly 40 years.



EMCC DR. RAŠEK –Laboratories and Certification Institute

**Consulting Services**

From layout via solution of real electrical interference problems up to electromagnetic environment protection, know-how on radio frequency engineering and experience from a total of more than 300 years of practice in EMC, radio, telecommunications and safety are readily being transferred.

**EMCC** performs consulting, studies, education and seminars, world-wide.

**EMCC DR. RAŠEK** carries out tests according to all national and international EMC and radio standards up to human exposure and radiation protection in the frequency ranges from zero up to 325 GHz as well as according to many environmental and safety standards.

**EMCC** is accredited and acknowledged to more than 3,000 standards by some 20 well reputed international organisations, such as the A2LA and the FCC USA and the VCCI Japan.

Furthermore, **EMCC** develops new test technologies for innovative requirements which are also introduced into committee work for drawing up new standards.



On-site full-system testing for immunity against indirect effects of lightning at customer facilities in Sweden



High Level Radiated Susceptibility Testing of Korean Utility Helicopter (KUH) at customer facilities in South Korea



EMCC DR. RAŠEK - Laboratories



ESD Test at EMCC's High Voltage Labs with 0.3 Megavolts



## 25 Years' Hofmann GmbH - A Success Story

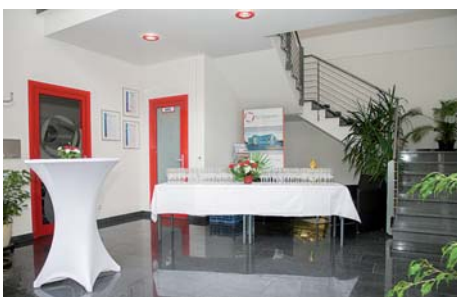


Precision, quality and cost-optimised production are the preconditions for success in the automobile and medical technology industries as well as in rescue technology. Hofmann GmbH from Gräfenberg-Haidhof in the idyllic centre of the region known as "Franconian Switzerland" has now been producing high-end products for these sectors for 25 years now, products that comply with the highest ISO quality standards. This is guaranteed by state-of-the-art equipment such as five-axis CNC turning and milling centres as well as by highly-qualified and continuously trained personnel. In 2014, Hofmann GmbH once more invested in high-tech machines (see photo) and can now offer not only a comprehensive range of quality measuring instruments but also the most modern equipment possible.



### Major anniversary - the company up close

What started as a one-man business 25 years ago grew over the years and is now a medium-sized company operating at national level with about 50 workers. On the occasion of this anniversary, the company organised a big celebration on the company grounds on 26.09.2014. For this event, the company opened its doors and showed the interested visitors precise production engineering up close. Within the framework of the celebrations, Hofmann GmbH used the slogan "Donations instead of Gifts" to request donations to the children's cancer ward in Erlangen University Clinic, instead of anniversary presents.



### Production at the highest level

The success of Hofmann GmbH is no accident. The smooth interplay between man, machine and quality management ensures the best possible execution even of complex orders from customers. This can be seen in well-known major corporations such as Siemens, for example, for whom the complex components for magnetic resonance tomography (MRT) scanners are produced. For renowned manufacturers in the prosthetics sector, Hofmann GmbH supplies high-quality knee fixations, drill templates and surgical rasps. Such rasps are used to prepare the femur for the anchoring of an endoprosthesis. In the last two years, this outstanding competence as a supplier for high-tech medicine was rewarded with the senetics Innovation Award for the best supplier in the healthcare sector. The senetics Innovation Award is under the patronage of Minister of State Melanie Huml (Bavarian State Ministry of Health and Care).

### Into the future - precisely

Hofmann GmbH attaches great importance to the training of committed young people, thus creating jobs in the region of Forchheim. For years now, the high quality of the training at Hofmann has yielded rich rewards, and this has been proved by numerous awards. Only this year, Thomas Weisel and Christian Hübschmann completed their training with outstanding marks, and also received special awards for this from the Chamber of Industry and Commerce in Upper Franconia. In this year's Training Award by the Vereinigten Raiffeisenbanken (cooperative banks), which was presented in cooperation with Forchheim District, Hofmann GmbH came first in the Industry section. In the 25 years to come, Hofmann GmbH will continue to devote itself to the training of young people, and will initiate new business cooperation ventures in order to meet the future requirements of customers even better.







## Infiana Group - The Film Expert



In Forchheim, films are not just running in the cinema but also in the form of plastic films straight from the assembly line. 160 years ago, the success story of Infiana started in Forchheim. Ever since, the company with its currently roughly 600 employees has been developing, producing, and refining specialty films for consumer and industrial market. The following areas use plastic films:

1. Consumer: Films by Infiana ensure that sanitary products, medical products and pills are packed solidly and immaculately. The company relentlessly pursues its objective of sustainable production. For example it has therefore developed biodegradable films.

2. Industrial: The release liners und surface films by Infiana meet the requirements of the construction industry and are mainly used for roofing and roof insulation. Additionally Infiana films are used in the sector of Composites Manufacturing for the aviation and wind energy industry. They are solid, impermeable, tearproof while displaying consistent characteristics under extreme temperatures.

3. Pressure-Sensitive Market: Special adhesive and release characteristics are in high demand among clients in the tape, label and graphic industries. For that market, Infiana develops high-end standard and customized film solutions such as silicone-coated release films for adhesive tapes and labels.

At its Forchheim site, the company initially started out by producing polished glass. Today, it produces films of the highest quality that are custom-fit for clients while meeting the highest market demands. Gernot Becker, General Manager EMEA: "Combined, our employees at the Forchheim site dispose of more than 10,000 years of experience. We use that to the advantage of our clients in order to develop innovations on site that are conceived to prevail around the globe."



**Infiana Germany  
GmbH & Co. KG**  
Zweibrückenstrasse 15-25  
91301 Forchheim

Fon. +49 (0) 9191/81-0  
Fax +49 (0) 9191/81-212

info.forchheim@infiana.com  
www.infiana.com



### High-tech tools from ebermannstadt for customers worldwide

With the establishment of a tool factory in Ebermannstadt, Germany, back in 1960, Karl Hertel laid the foundations of today's production facility owned by **Kennametal Inc.**, of Latrobe, Pennsylvania, one of the world's leading supplier of metal cutting tools and systems.

The production facility is the largest employer in Ebermannstadt (550 people) and one of the most important companies in the district of Forchheim.

### A complete range of products

At **Kennametal** the proverbial "finishing touches" are put onto products made of sintered carbide materials, cermet, and ceramics. Such products – primarily metal cutting inserts and drills – are also made with high-tech coatings for a long tool life. **Kennametal's** product range also includes wearparts made of sintered carbide, ceramics, valve lifters for diesel engines, tools for non chipping applications (such as solid carbide rollers for steel mills), and special purpose tools. Complete quality management and certification according to DIN ISO 9001 guarantee high-tech tools. The DIN ISO 14001 environmental certificate is also in increasing demand by customers from the automotive, machine building, rail, aerospace, mining, and road construction industries. Like the company's other German locations, Ebermannstadt is certified according to both rigorous standards.

### Lean processes

Lean processes have become an important factor in making a company competitive. The Value Business System developed by **Kennametal** includes projects to promote lean production. Those optimization processes guarantee highly flexible production so that the company can respond swiftly to changing conditions on the market.

### People are the center of attention

Demanding requirements and projects of this kind will be successful only when employees identify with them. Such identification also promotes job security. Another important instrument is flexible working hours. That's why Kennametal has been using time accounts for years now to cover peak demand periods and then offer time off when demand is down. Kennametal puts great importance to basic training and further training. The company works with the educational establishment of the Bavarian economy (bbw) to provide further training in technical business administration to master craftsmen or technicians (as well as outside participants). In addition, the **Kennametal** academy offers a wide range of courses that make it possible to discover one's individual potential.

### Successful training

The Ebermannstadt plant has an excellent reputation in the region due to the training it offers; more than 600 young people have successfully served an apprenticeship as industry mechanics, mechatronics, or computer specialists there since 1961. New is training offered for energy electronics specialists and ceramics specialists. Certificates from the chamber of commerce and industry confirm how advanced the training is. Graduates of the technical college of Forchheim receive on-the-job training as part of a co-operative effort. Students doing their practical training and school-absolvents wanting to do "introductory training" can also participate. Kennametal's special commitment to creating jobs and apprenticeships in Ebermannstadt received the "Jobstar" award of the "Region Nürnberg e.V."



### KENNAMETAL Produktions GmbH & Co. KG

Altweiherstr. 27-31

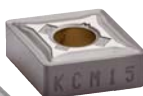
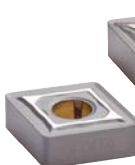
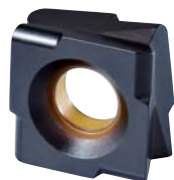
D-91320 Ebermannstadt

Phone +49 (0) 9194/720-0

Fax +49 (0) 9194/720-230

E-mail: [k-ebm.information@kennametal.com](mailto:k-ebm.information@kennametal.com)

Internet: [www.kennametal.com](http://www.kennametal.com)





## Liapor GmbH & Co. KG; Hallerndorf - Pautzfeld

### Liapor meets all the requirements of modern construction

Pure natural and around 180 million years old – Lias clay forms the high quality basis for Liapor

The factory was founded in 1969 and has had a production capacity of 800.000 m<sup>3</sup> a year since 1985. Apart from the clay pits the nearby motorways and above all the Main-Danube Canal were important factors for the establishment of the factory in Pautzfeld.

High-quality natural clay, which is extracted via open pit mining in the area around Eggolsheim, is a basic product for the production of the Liapor aggregate.

This clay is pelletised into small, round granules which are burnt in a three-stage rotary kiln. At around 1,200°C the organic substances inside the clay burn and the pellets expand, while the outside skin melts and is sintered. In this way a so-called "expanded clay" is produced: light clay granules with a very fine porous structure, which features thermal insulation and sound absorption, thermal inertia and good diffusion properties.

Its optimal spherical shape is worldwide unique. Liapor pearls are incompressible and combine high compressive particle strength with low weight. In water, Liapor is neutral; it will not degrade. Liapor is not affected by adverse weather conditions or frost, it is resistant to aggressive acids and alkaline solutions and is a non-combustible building material which meets Germany's stringent fire regulations A 1 to DIN 4102.

The Liapor principle allows light concrete to be produced in all kinds of property classes and densities. This enables Liapor customers to produce highly insulating bricks, wall and roof elements on the one hand and structurally compressive light concretes with a high crushing strength on the other hand.

The pearls enable high thermal insulation and good sound absorption at building restoration, e.g. at wooden floors. They can easily be poured and require no compression.



A completely different application is the use of Liapor pearls in Hydroculture for potted plants. Due to their characteristics they offer good ground for the roots. Conventional soil is simply replaced with Liapor, a growing medium that doesn't need a lot of care, whereas Liadrain is ideal for intensive and extensive roof plantings.

### Liapor GmbH & Co. KG

Industriestr. 2  
D-91352 Hallerndorf-Pautzfeld  
Phone +49 (0) 9545/448-0  
Fax +49 (0) 9545/448-80  
E-mail: [info@liapor.de](mailto:info@liapor.de)  
Internet: [www.liapor.com](http://www.liapor.com)

# Liapor®





## Neunkirchener Achsenfabrik AG



NAF AG has been developing and producing axles and gearboxes for self-propelled machinery in the construction, forestry and agriculture sectors since 1960. The third-generation family-owned company, which is based in the German town of Neunkirchen am Brand, employs 500 workers. With dedicated branch offices in Russia and North America and strategic distribution partners in Europe and Asia, it has a global presence as a system partner to its customers. 80% of the total annual production of around 30,000 axles and gearboxes is exported. 5% of annual sales, which amounted to 103 million euros in 2013, are invested directly in research and development by NAF.

#### Coherent modular system

The product range comprises a wide variety of different planetary, portal and tandem axles as well as gearboxes and drive components. As the world market leader in forestry machinery drives, NAF caters for the market segment in which the most challenging operating conditions need to be handled. The axles prove their worth in hot, cold and wet conditions, ice, snow, mud and dust and at the same time they conserve sensitive soil structures. The coherent modular system, which developed from this high-performance profile, reflects the individual challenges faced by the manufacturers of vehicles across different sectors. By combining the benefits of individual and mass production, NAF's manufacturing operation is able to offer a wide range of solutions for a variety of different applications with low changeover costs – from combine harvesters and dumper trucks through to specialist vehicles deployed at airports.

#### Driven by innovation and strong on service

A modular approach and modular processes enable NAF to deliver answers to tomorrow's challenges today. The innovations, which are developed to meet the toughest assignments, also drive forward the solutions for the cost, service and logistics requirements. In 2012 and 2013, the American agricultural, construction and forestry machine specialist John Deere recognised NAF's achievements not just in terms of the quality of its products, but also in the categories of delivery reliability, technical support, partnership relations and cost management by presenting it with the "Achieving Excellence Award". In 2013, NAF was also the only one of 4,000 supplier partners to be awarded the title of "Supplier of the Year" in John Deere's Construction and Forestry division.



#### Strong responsibility for the future

As a company that is steeped in tradition and has a solid regional base, NAF relies on long-term business relationships, loyalty from its employees and a responsible approach to shaping the future. Consistent further training measures and an ongoing commitment as a company that takes on apprentices lay the foundation for the company's continued successful development.

#### NAF Neunkirchener Achsenfabrik AG

Weyhausenstraße 2  
91077 Neunkirchen am Brand  
Tel.: +49 9134 -702-0  
[www.nafaxles.com](http://www.nafaxles.com)

modulares Denken | modulare Prozesse |  
modulare Produktkonfigurationen  
MODULAR-MINDED AXLES  
SINCE 1960  
NAF • MODULAR-MINDED AXLES



NAF • MODULAR-MINDED AXLES



Chocolate makes happy – around 9 kg of it each German citizen consumes by average per year.

It's a long way to get this delicacy: a sophisticated production process determined by exclusive recipes, knowledge and experience leads to the unique character of our products.

Piasten chocolate factory was founded 1923 in Brieg/Upper Silesia.

After WWII, business was restarted by Mr. Anton Hofmann, now from Forchheim/Upper Franconia. But first production was noodle under the brand "Dreilind". 1948, the production of sugar and chocolate confectionery was reestablished. Over the time production portfolio was more and more expanded.

The next milestone is the year 1992: Cadbury Schweppes Group took over shares of the company.

Our quality driven policy was confirmed by several certifications: since 1998 Piasten was holding ISO 9001 Certificate, since 2004 it is IFS approved.

In the year 2005 a management-buy out went again to an owner-managed company. Finally, in October 2014 Piasten was fully taken over by Katjes International.

Nowadays, the company is one of the leading producers of Assorted chocolates, Hard boiled candies, Panned products and other chocolate items. It is offering jobs to more than 400 employees.

Additionally, 25 working places managed by Lebenshilfe Forchheim e.V. are integrated into our production process.



Actually, we produce our own brand as well as private label for well known chains and discounters.

Piasten sweets are well known all over the world. We have permanent export to more than 50 countries.

Directly at Piasten one can find our factory shop. Here we present our wide portfolio.

Moreover, one can find here products, which are not available in retail. Every day, numerous customers sourcing here delicious sweets.

#### Piasten Shop

Open

Monday – Friday 10 am – 5 pm

Piastenstr. 1, 91301 Forchheim

Telefon 09191 / 611-0

[www.piaستن.de](http://www.piaستن.de)

[office@piaستن.de](mailto:office@piaستن.de)





Schmetterling is a solid and reliable partner in the tourism sector. We are a family run, medium-sized travel agency with more than 300 employees and a touristic sale of 1,6 billion Euro. For over ten years we have grown faster than the competition.

The outstanding about Schmetterling is that you can find the whole world of tourism under one roof. A variety of top positions in each of our business segments make us a strong partner. Therefore a lot of satisfied customers have relied on us for a long time – whether travel agencies, tour operators and touristic producers or companies and end customers.

### International travel agencies cooperation

With more than 3,500 partners we are the biggest independent travel agency cooperation in Europe.

### Schmetterling Technology

To ensure that tourism can work professionally and profitably we have developed the Schmetterling full-service technology package for travel agencies throughout Europe. Over 6,000 satisfied European partners prove the ease of planning, booking and selling of touristic services.

### Schmetterling Network

Tourism and end customers enjoy the Schmetterling Network. We offer producers and travel agencies a comprehensive and diverse access to international touristic offers and their distribution.

### Schmetterling Insurance Operator

The Schmetterling Insurance Operator offers especially tourism experts a wide range of insurance products – starting from online insurance certificates up to liabilities for the tour operators.

A reliable cooperation with our partners is number one priority for Schmetterling. We are characterized by short decision-making processes and entrepreneurial spirit

### Behind the scenes

We see ourselves as a big family with mutual trust and help. We supporting our employees the best we can focus on education and further trainings.

At the moment about 40 young people are doing their apprenticeship in ten different businesses. Well trained staff guarantees our success.

Therefore we offer excellent possibilities for takeover after successful completion of the training – of course all across Germany.

## Schmetterling – Touristik-pacemaker for cooperation and technology



### Our commitment:

- Trust and independence
- Consistency and flexibility
- Cooperation and uniqueness
- Passion and openness

### Schmetterling Reisen GmbH & Co KG

Hauptstrasse 131  
D-91286 Obertrubach-Geschwand  
Tel.: +49 9197 62 82 0  
Fax: +49 9197 62 82 182  
[www.schmetterling.de](http://www.schmetterling.de)  
[info@schmetterling.de](mailto:info@schmetterling.de)

# Schmetterling






## Traditional Family Enterprise with a look at the Future

Schmetterling Verkehrs-Logistik GmbH is a traditional family owned business situated in the Franconian city of Obertrubach. Chief executives Daniela and Elmar Singer have shaped Schmetterling Verkehrs-Logistik into a leading transportation company. Both are looking at 20 years of experience within the Schmetterling group, whose roots go back as far as 1976 when it was founded.

### Strong and reliable Employer in the Region

The portfolio of the company, operating nationwide, contains public transport, transport logistics, tourist traffic services, taxi, rental services and its own tour operator. Currently, the successful enterprise owns more than 100 buses based in Fürth and Obertrubach. 90% of its 200 plus employees are professional drivers for public transport. Schmetterling highly values excellent training and runs its own academy for transportation.

### Competence and Reliability in Transportation Logistics

Modern buses for public services are being used daily on concessionary or rental routes in Nuremberg, Fürth, Erlangen as well as in the administrative districts of Bayreuth, Forchheim, Erlangen-Forchheim and Fürth. Additionally, mini buses are serving as shuttle or ambulance services and First Class Coaches for 28 to 80 passengers are crisscrossing all over Europe.

Public Services were continuously expanded since 2011 and today Schmetterling has grown to be the largest family owned public transit service provider in the metropolitan region taking people to work on a daily basis or to their leisure time activities. Many local communities are Schmetterling customers when it comes to public transit, e.g. the cities of Nuremberg (VAG), Erlangen (ESTW), Fürth (INFRA), the administrative districts of Fürth and Forchheim.

### Lifeblood and Passion

With a lot of lifeblood and passion every employee contributes to his or her passengers and customers well-being. Daniela Singer, chief executive, appreciates this kind of service attitude and regards this as another success for region and company.



### Schmetterling Verkehrs-Logistik in numbers

January 1st 2011	disincorporation from Schmetterling Travel GmbH & Co KG (W.+C. Müller, parents)
238	employees
184	professional drivers for public transport
3,647,448	miles driven in 2013, which converts to
147	times around the globe with our buses
124	vehicles
2	depots in Obertrubach and Fürth
April 2014	opening of drivers school in Fürth
April 2015	opening of new company building in Obertrubach

# Schmetterling



### Schmetterling Reise- und Verkehrs-Logistik GmbH

Bergstraße 20  
D-91286 Obertrubach  
Tel. +49 9245 983260  
Fax +49 9245 9832699  
info@SchmetterlingReisen.de  
www.SchmetterlingReisen.de



## Siemens Forchheim – recognized for top quality and environmentally friendly production

# SIEMENS

**Siemens** Healthcare's Forchheim facility has been manufacturing angiography systems to diagnose and treat vascular diseases since 1990. The manufacture of computed tomography (CT) systems for medical imaging began four years later in what is now the world's largest CT factory. Forchheim has also been engaged in refurbishing used medical devices in all product segments since 2004.

Innovative manufacturing techniques and continuous improvements in productivity are supported by short production paths. Hence, it is not surprising that the Forchheim facility has received frequent international recognition. "Factory of the Year" and "Best Factory" are just two of the awards acknowledging the high level of commitment shown by the **Siemens** employees. In Forchheim, employees with a wide range of skills and experience work in areas ranging from product development, manufacturing and quality management to logistics, marketing and customer service for global sales.

Innovations developed at the **Siemens** Forchheim facility include the first angiography system with industrial robot technology and the world's first CT system with two x-ray sources. For the benefit of patients, Siemens engineering devotes particular attention to reducing radiation dose. This means the imaging and therapy systems developed and manufactured in Forchheim help make examinations faster while requiring less dose. Siemens solutions can make diagnoses more precise, treatments more successful and, at the same time, reduce healthcare costs. Taking back, refurbishing and re-selling high-quality medical technology also plays a key role here. Refurbishing systems contributes to reducing resource consumption and CO<sub>2</sub> emissions and is environmentally friendly.

**Siemens AG, Healthcare**  
Siemensstraße 1  
D-91301 Forchheim, Germany  
Tel. +49 (0) 9191/18-0  
[www.siemens.com/healthcare](http://www.siemens.com/healthcare)



Angiography systems manufactured in Forchheim are used for interventional imaging in radiology, cardiology and image-guided surgery.



Made in Forchheim: with the high-end CT Somatom Force, early detection examinations can be conducted using up to 50 percent less radiation dose.



**More than just logistics**

The "More than just logistics" principle has been the engine driving for the development of the Simon Hegele Group and its services for over 90 years. The company's core business is developing forward-looking business strategies throughout the entire supply chain. The Simon Hegele Group occupies 2,500 employees worldwide.



Simon Hegele supports its customers far beyond the bounds of standard logistics services, offering everything from procurement logistics services to individual packaging concepts for highly-sensitive hi-tech devices, worldwide transport, assembly and installation of the highly-sensitive devices, airfreight safety checks, customs processes and even handling ESD goods. The establishment, further development and application of deep-rooted sector-specific expertise are being driven forward all the time in the sectors retail, healthcare and industry, IT/communication. This know-how and understanding of processes allows Simon Hegele to become an integral part of its customers' supply chains. The Forchheim region has become the hub of the healthcare division for Simon Hegele. When it comes to the transport and assembly of hi-tech medical devices, the Simon Hegele Group has been among the international market leaders for many years. Highly-specialised employees start from Forchheim to travel the world installing hi-tech medical devices.

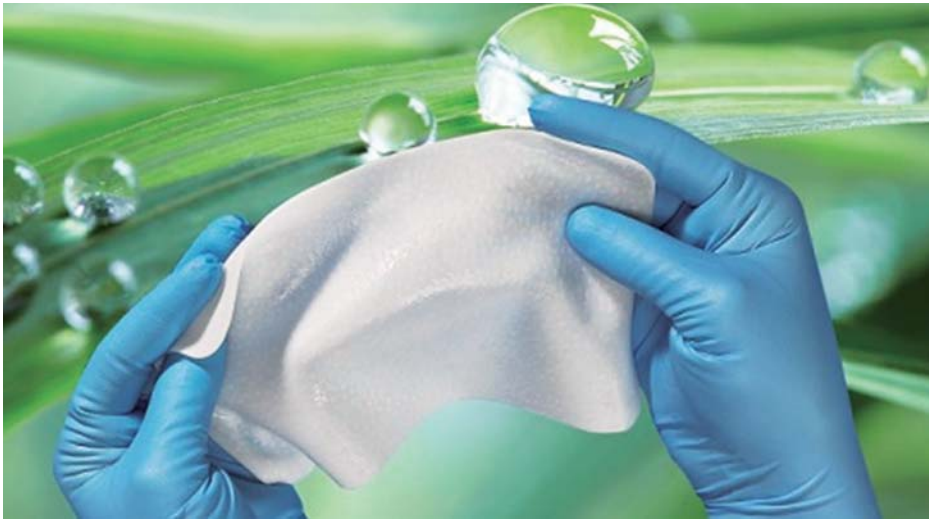
The Simon Hegele Group has once again been named one of the TOP employers among German medium-sized companies. This is not the first time that the company has been awarded this quality seal for outstanding qualities as an employer.

**Simon Hegele**  
Gesellschaft für Logistik und Service mbH  
Rittigfeld 1  
91301 Forchheim  
Tel.: +49 (0)9191 7205 0  
[www.simon-hegele.com](http://www.simon-hegele.com)





## Restoring Health, Improving the Quality of Life



Innovation 2014: Successful introduction of an innovative transplant made of the skin tissues of pigs known as "porcine Dermis". It is exclusively manufactured at the Neunkirchen site for global distribution.



### Innovation for more than 40 Years

With more than 40 years of experience and more than 3 million transplants, Tutogen Medical has gained an excellent reputation among medical experts. It is the objective to push forward regenerative medicine on a global scale with high quality solutions that are "Made in Germany". The most recent example is the development of an innovative tissue membrane of porcine origin which can be used in soft tissue repair.

Also when it comes to traineeship, Tutogen Medical is firmly committed: In addition to the apprenticeship as European Industrial Management Assistant, the company offers vocational trainings as IT Specialist.

RTI Surgical is one of the global leaders in tissue-based innovations. Tutogen Medical GmbH with legal domicile in the German Forchheim Rural District has been a part of this international story of success since 2008.

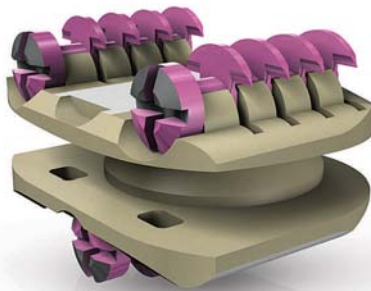
### In Compliance with Health

At the Neunkirchen site, human tissue donations and tissues of animal origin are prepared in order to provide sterile pharmaceuticals and medical devices for patient care. Biological tissue is put to medical use in cases where bone or tissue defects need to be repaired as a consequence of an accident or a disease. Examples of this are dental interventions in order to reconstruct a jawbone or the surgical treatment of inguinal hernias.

At Tutogen, 160 employees commit themselves to the quality, safety and availability of the biological transplants. The tissue is prepared under clean room conditions, as far as possible in a precise and modern manufactory and according to stringent legal stipulations. An effort that is worth it as biological tissues have a decisive advantage when compared with synthetic solutions: they can normally be converted to endogenic vital tissue in the recipient's body during the healing process.

### Company Expansion

Due to the takeover of a manufacturer of metal implants and synthetic surgical materials RTI Surgical significantly expanded its portfolio for patient care. Worldwide the company now additionally offers a comprehensive range of implants for spine surgery procedures. For Germany this new sector of the company is located at Neunkirchen am Brand as well.



Corporate Development:  
Serving health to an even greater extent since 2013, due to the acquisition of a manufacturer of metal implants and synthetic surgical materials.

### RECOGNIZED TRAINING COMPANY

- European Industrial Management Assistant
- IT Specialist

In Forchheim Rural District Tutogen finds best conditions: the close connection to regional universities and research facilities, the lived partnership between business and politics, the joint commitment to the gaining of professional trainees and last but not least, the high quality of life that exists in the region makes the rural district an attractive location for both companies and their employees.

### Tutogen Medical GmbH

Industriestraße 6  
91077 Neunkirchen am Brand, Germany  
Tel. +49 (0)9134 99 88-0  
Fax +49 (0)9134 99 88-99  
info@tutogen.de  
www.tutogen.de







## Junior Chamber Forchheim - Meeting place for young executives and stimulus for the business location

**The Junior Chamber Forchheim** consists of young entrepreneurs and executives from all economic sectors. It was established in 1974 and currently has 30 active members and 40 supporting members from all parts of the district.

Their main objective is to support young executives by exchanging corporate experience, by wellfounded information on all findings and instruments of commerce and industry and by discussing general topics. The constructive cooperation in various projects at the Junior Chamber, which aim at supporting the economy in the Forchheim district, ensues the establishment of personal contacts and networks for the young entrepreneurs.

These objectives are realized by means of varied events, e.g. seminars, lectures, factory tours, trips, etc.. Festive events, such as the summer party, the Annafest morning get-together for a pint or not and other social events are also part of the program. For our annual calendar of events please refer to the homepage of Junior Chamber Forchheim, [www.wjforchheim.de](http://www.wjforchheim.de).

The board of directors consists of four equal members, who are elected for a term of two years by the general meeting. Each year two of the members of the board of directors resign and are replaced by two new ones. The association of the Junior Chamber Forchheim is affiliated with the Chamber of Industry and Commerce for Upper Franconia in Bayreuth and part of the nationwide network of the Junior Chamber Germany ([www.wjd.de](http://www.wjd.de)) with a total of currently 211 junior circles and about 10,000 members. Through the Federal Association the Junior Chamber Forchheim is also a member of the global association Junior Chamber International ([www.jci.cc](http://www.jci.cc)) with currently about 200,000 members in over 120 nations.

Its members are self-employed business men and women and salaried executives from all economic sectors.

**Wirtschaftsjunioren Forchheim**  
Postfach 1206, D-91294 Forchheim  
Phone +49 (0) 9191/72 17-0  
E-mail: [info@wjforchheim.de](mailto:info@wjforchheim.de)  
Internet: [www.wjforchheim.de](http://www.wjforchheim.de)





Our 29 municipalities and mayors are on the spot to help you, for example, when dealing with the local land-use planning, concrete settlement wishes or commercial space:

## Contacts in Landkreis Forchheim

Community	Mayor	Phone	E-Mail
Markt Eggolsheim	Schwarzmann, Claus	09545/444-0	markt.eggolsheim@eggolsheim.de
Markt Egloffstein	Förtsch, Stefan	09197/6292-0	info@egloffstein.de
Stadt Forchheim	Stumpf, Franz	09191/714-0	stadt@forchheim.de
Markt Gößweinstein	Zimmermann, Hanngörg	09242/980-14	rathaus@goessweinstein.de
Gemeinde Hallerndorf	Gunselmann, Torsten	09545/4439-0	gemeinde@hallerndorf.de
Gemeinde Hausen	Zimmer, Gerd	09191/7372-0	gemeinde@hausen.de
Gemeinde Heroldsbach	Büttner, Edgar	09190/9292-0	gemeinde@heroldsbach.de
Markt Igensdorf	Rast, Wolfgang	09192/9252-5	rathaus@igensdorf.de
Gemeinde Langensendelbach	Siebenhaar, Oswald	09133/77488-0	verwaltung@langensendelbach.de
Markt Neunkirchen a. Brand	Richter, Heinz	09134/705-0	info@neunkirchen-am-brand.de
Gemeinde Obertrubach	Grüner, Markus	09245/988-0	obertrubach@trubachtal.com
Markt Pretzfeld	Stark, Rose	09194/7347-18	info@pretzfeld.de
Markt Wiesenttal	Taut, Helmut	09196/9299-0	rathaus@wiesenttal.de

Management Community	Community Chairman*	Phone	E-Mail
----------------------	---------------------	-------	--------

### Verwaltungsgemeinschaft Dormitz

Gemeinde Dormitz	Bezold, Holger	09134/9969-20	post@vgdormitz.de
Gemeinde Hetzles	Schmidtlein, Franz*	09134/263	
Gemeinde Kleinsendelbach	Werner, Gertrud	09134/9969-0	

### Verwaltungsgemeinschaft Ebermannstadt

Stadt Ebermannstadt	Meyer, Christiane*	09194/506-0	info@ebermannstadt.de
Gemeinde Unterleinleiter	Riediger, Gerhard	09194/9530	

### Verwaltungsgemeinschaft Effeltrich

Gemeinde Effeltrich	Heimann, Kathrin*	09133/7792-0	info@effeltrich.de
Gemeinde Poxdorf	Steins, Paul	09133/7792-22	

### Verwaltungsgemeinschaft Gosberg

Gemeinde Kunreuth	Ochs, Konrad	09191/7950-0	poststelle@vg-gosberg.de
Gemeinde Pinzberg	Seeber, Reinhard*	09133/779222	
Gemeinde Wiesenthau	Drummer, Bernd	09191/7950-0	

### Verwaltungsgemeinschaft Gräfenberg

Stadt Gräfenberg	Nekolla, Hans-Jürgen*	09192/709-0	info@graefenberg.de
Markt Hiltpoltstein	Bauer, Gisela	09192/709-51	
Gemeinde Weißenhohe	Braun, Rudolf	09192/7143	

### Verwaltungsgemeinschaft Kirchhehrenbach

Gemeinde Kirchhehrenbach	Gebhardt, Anja	09191/7989-0	info@kirchehrenbach.de
Gemeinde Leutenbach	Kraft, Florian	09191/7989-60	
Gemeinde Weilersbach	Amon, Gerhard*	09191/7989-0	





Publisher:  
Landkreis Forchheim, 2015

Editorial:  
Dr. Andreas Rösch

Design:  
DESTYNY Alexander Schütz  
[www.destyny.de](http://www.destyny.de)

Pictures:  
Landratsamt Forchheim,  
Stadt Forchheim,  
Reinhard Löwisch,  
Frankentourismus/frs/Hub



Print:  
Druck Inform GmbH  
[www.druck-inform.de](http://www.druck-inform.de)



This booklet is presented to you by:





in cooperation with



Federal Office  
for Migration  
and Refugees

Focus on people -  
support and integrate

## Learning German in Integration Courses

If you live in Germany, you should try to learn German  
as quickly as possible.

It is important to do so to meet new people,  
to make yourself understood in everyday life, and to find work.

Integration courses can help you achieve these aims.

Contact:

**VHS des Landkreises Forchheim**

Tel. 09191/86-1060

E-Mail: [kontakt@vhs-forchheim.de](mailto:kontakt@vhs-forchheim.de)

